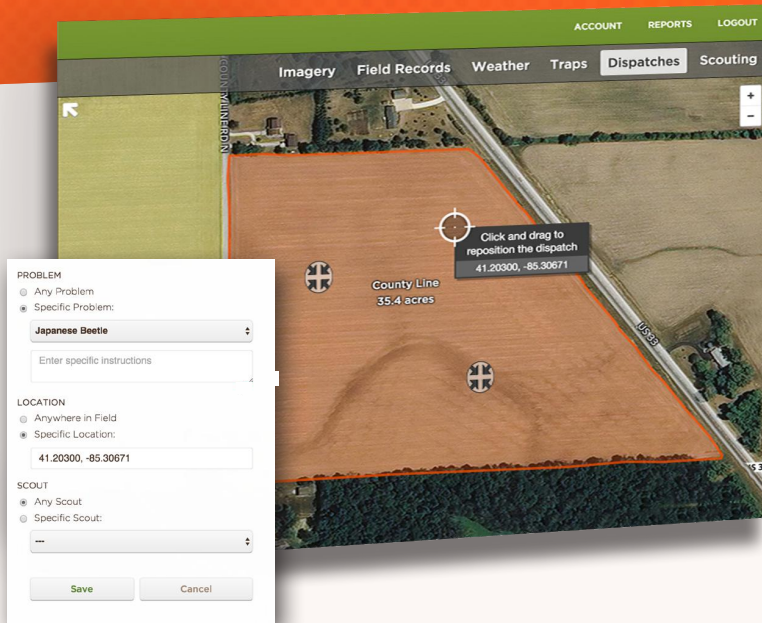


### ENHANCE YOUR SCOUTING DATA WITH ACTIONABLE SCOUTING INSIGHTS

Unlock deep insights into crop growth stage models, long-term weather, and economic impact for more advanced and efficient decision making about pest-related problems pertaining to insects, weeds, and disease.



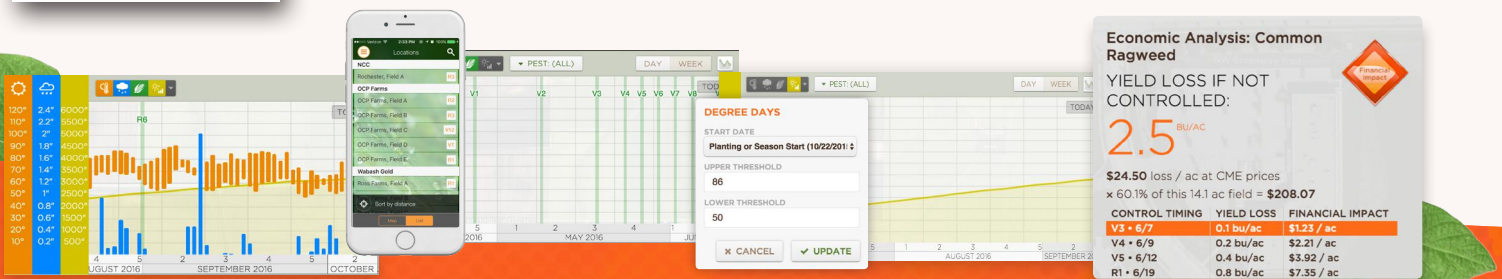
### PRECISION DISPATCH

Direct scouts to investigate a suspected problem in the field.

Scouts can be dispatched:

- To assess a general problem across the field
- To a specific location in the field
- To a specific pest or problem in a specific location
- On a specific day

Effectively optimize your scout's time in the field with every trip.



### LONG-TERM WEATHER

Inform management decisions with historic and forecasted field level temperature and rainfall data.

### GROWTH STAGE CORN, SOYBEAN, WHEAT

Create projections with interactive growth stage models for corn, soybean and wheat.

### DEGREE DAY CALCULATOR

Customize field level min/max thresholds to inform management decisions.

### ECONOMIC IMPACT

Assess economic impact of treatment options based on quantified field pest observations.

**SPENSA**

www.spensatech.com  
info@spensatech.com  
(765) 588-3592

GET INSIGHTS INTO YOUR SCOUTING DATA

Unlock access to additional data insights on the Spensa Agronomic Platform

Learn more about Scouting Insights at: [www.spensatech.com](http://www.spensatech.com)